

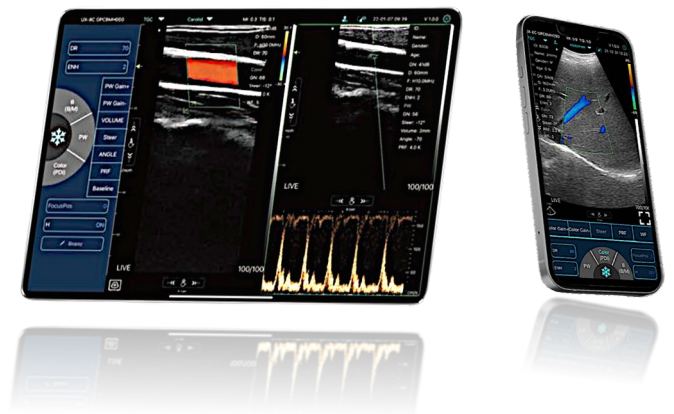
# Aurison Dual Lite

## Wireless Handheld Ultrasound



# Unrestricted Clinical Mobility

Use Aurison Dual Lite independently with the Aurison Mobile App on any smart device. This consolidated handheld system integrates linear and convex transducers, liberating clinicians from cords and cramped spaces while delivering uncompromising imaging beyond spatial limitations and maintaining high-performance scanning capabilities wherever care is needed.



## Critical Care Acceleration

Designed for rapid response, the Aurison Dual Lite can be deployed within seconds at any point of need. This dual-probe system provides versatile bedside diagnostics, enabling faster clinical decisions during critical interventions without operational delays. Empower your frontline teams with high-quality imaging exactly when every minute counts.

### Confident Performance with Every Scan

- Scanning modes: B-mode, M-mode, Color Doppler, Power Doppler, PW, and Tissue Doppler Imaging
- Dedicated presets for Cardiac, Abdomen, Lung, Transcranial Imaging (TCI), Emergency Medicine (EM), Trauma (FAST), EM Abdominal Aortic Aneurysm (AAA), Bladder, OB/GYN, and Vascular





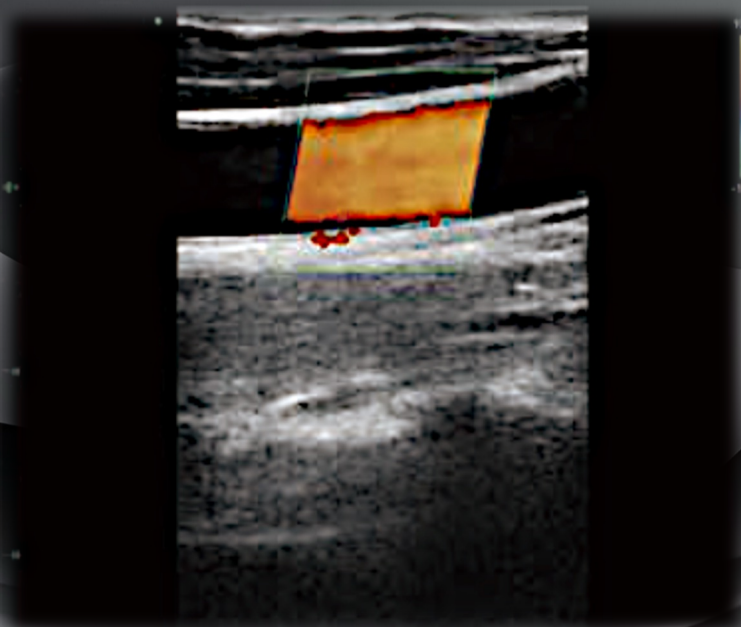
## Aurison Dual Lite Dual-Probe Power, One Handheld

By integrating linear and convex transducers into a single handheld system, the Aurison Dual Lite eliminates the need for probe swaps during critical interventions. Its advanced technology enables instant application switching while delivering seamless wireless connectivity for mobile platforms. Proprietary image optimisation ensures diagnostic clarity across abdominal, vascular, OB, and MSK applications. This clinically validated device empowers rapid, cart-free assessments with consolidated imaging power in time-sensitive environments.

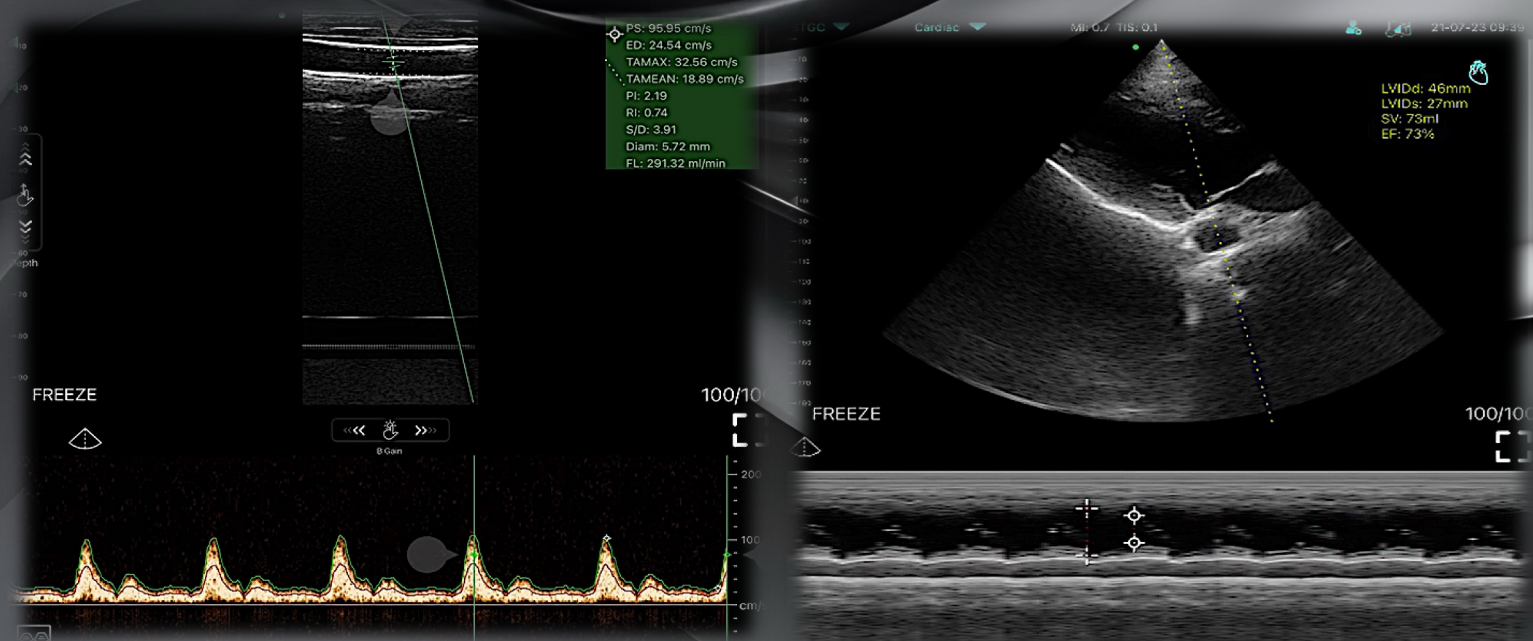


# Clinical Gallery

Unlock versatile scanning with integrated linear and convex probes. Advanced Image Modification Technology optimizes every scan in real-time, delivering crystal-clear, diagnostic-quality images. Experience streamlined efficiency without compromising clinical precision, all in a single handheld device.



Colour Mode



Power Doppler Mode

M Mode

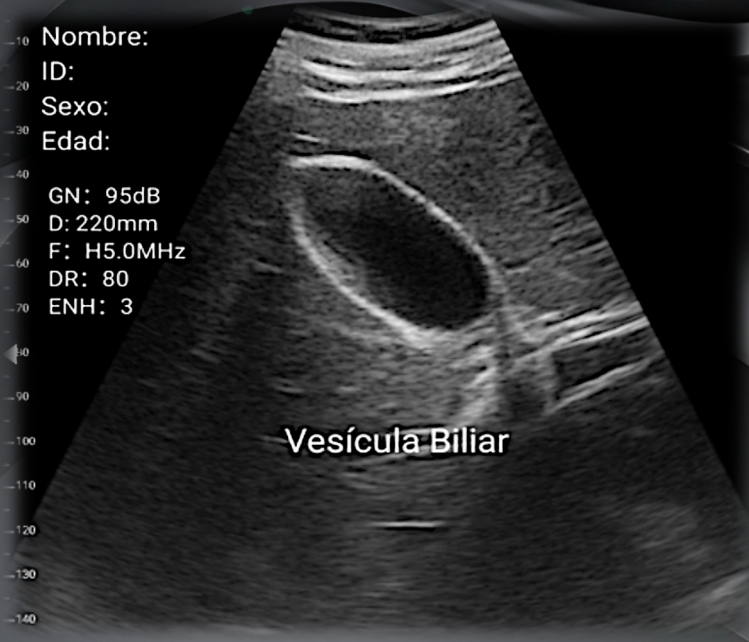


# Clinical Gallery

Master challenging abdominal and small-parts imaging with diagnostic-grade resolution. AI-enhanced visualization crisply delineates liver parenchyma, pancreatic contours, and gallbladder walls—even in deep/echo-poor regions. Our integrated linear/convex probes deliver unmatched handheld acuity for confident pathology identification at the point of need.



Pancreas



Vesícula Biliar

Gall Bladder



Liver

# Precision Diagnostics, Handheld Sovereignty

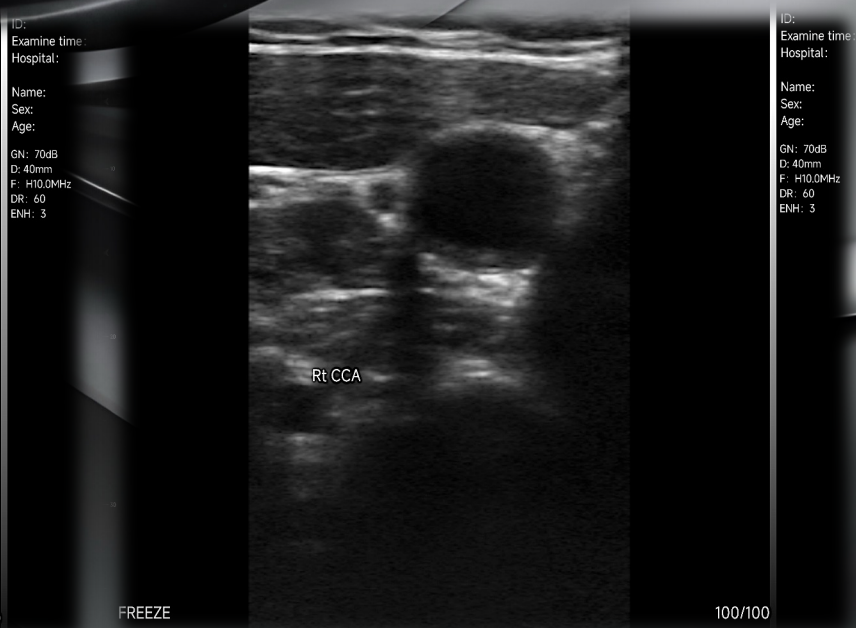
Resolve submillimeter pathologies with diagnostic confidence. Our AI-enhanced imaging delivers exceptional clarity for abdominal masses, carotid plaques, and small-part anomalies. The integrated linear/convex probes provide hospital-grade resolution in a handheld system—empowering accurate identification wherever care demands uncompromised precision.



Gall Bladder Polyps



CCA Plaque



CCA Plaque

# Peace of Performance Assurance

## Continuous Innovation

Our software-based technology platform enables effortless upgrades, pushing performance boundaries long after purchase. With Aurison, your system evolves alongside advancements, guaranteeing lifelong imaging excellence and peace of mind.

## Standard Warranty Coverage

The Aurison Standard Warranty\* provides the following for one (1) year from the date of purchase:

- **Hardware Components:** Coverage for the main system and associated parts against manufacturing defects.
- **Technical Support:** Access to assistance through local authorised distributors.
- **Transducer Reliability:** Protection for standard transducers under conditions of normal wear or operational failure.
- **Software performance updates** with the Aurison platform.

Terms & Conditions:

1. Valid exclusively for systems purchased through Official Aurison Authorised Distributors.
2. Warranties for purchases from non-authorised agents are not standardised and may differ.
3. Extended coverage options are available through upgradable warranty packages.

### Transducers

C10RL Pro Convex & Linear Probe

### Battery

3 hours (working time), More than 5 hours (standby time)

### Weight

170g

**Aurison Medical Technologies Co., Ltd.**

Xiamen, China

Email: [enquiry@aurison-ai.com](mailto:enquiry@aurison-ai.com)

[www.aurison-ai.com](http://www.aurison-ai.com)

Aurison® is a registered trademark of Aurison Medical Technologies Co., Ltd.

All brands and product names are trademarks of their respective owners.

©2025 Aurison China



**AURISON**  
SEE BEYOND THE SURFACE. POWERED BY AURISON AI